

# BEL HORIZON SELF CATERING RESIDENCE

[www.BelhorizonSeychelles.com](http://www.BelhorizonSeychelles.com)



Bel Horizon Holiday Homes proposes attractive, well-appointed self-catering accommodation in an ideal beachfront location on Mahe Island's scenic north-east coast, just a short drive from legendary Beau Vallon beach and a mere 20 minutes from the capital Victoria. The property comprises 2 semi-detached villas, one of 2 bedrooms and one of 3 bedrooms and a small one bedroom apartment on the ground floor.

Bel Horizon's **one bedroom apartment** boasts a master bedroom with adjoining, en-suite bathroom with shower and changing room, open-plan fully equipped kitchen, living room and eye-catching terrace that opens onto your own small garden overlooking the ocean. Ideal for 2 adults - covers a spacious **51 sqms**.



## **Key features include:-**

- Direct beach access
- Private terrace
- DVD player, flat-screen satellite TV in the living room
- Internet wifi access

- Hair dryer
- In-room safe
- Iron and Ironing Board
- Large Tropical Garden bordering the sea

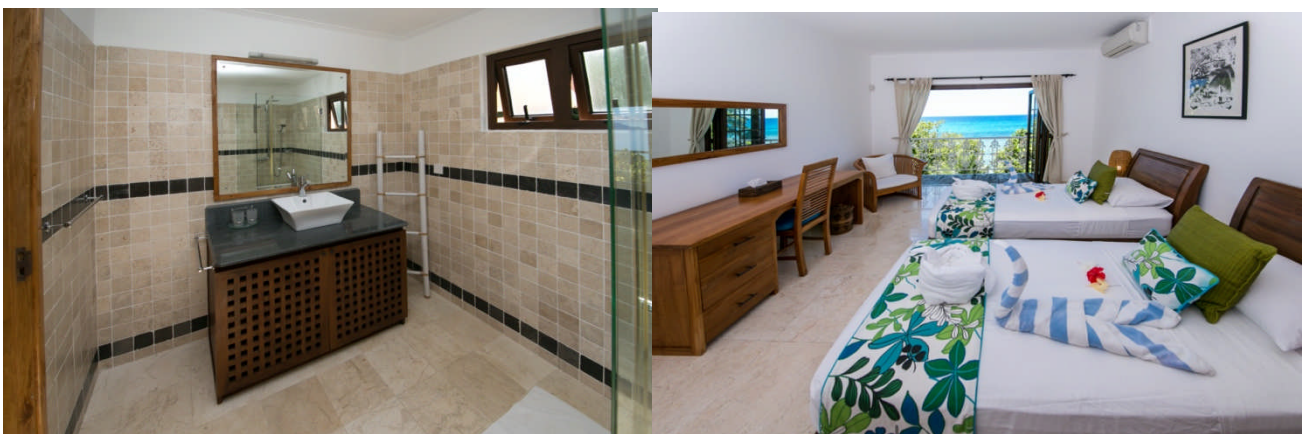
The **2 bedroom semi-detached villa** has a master bedroom with en-suite bathroom with shower and large verandah with day bed and armchair whilst the guest room has an en-suite bathroom with shower and small verandah. These rooms are located on the first floor whilst the spacious open-plan living room, fully equipped kitchen, dining room are situated on the ground floor, opening onto a private verandah with additional dining table and sofa. On this level there is a guest bathroom as well. The entire unit is sea-facing, commanding breathtaking views from all levels. Accommodation covers **107.30 sqm** and is ideal for 4 persons i.e 4 adults or 2 adults and 2 children.



**Key features of the 2 bedroom semi-detached villa include:-**

- Direct beach access
- 2 large Private balconies as well as a small one
- DVD player, Flat-screen satellite TV in the living room
- Internet wifi access
- Hair dryer
- In-room safe
- Iron and Ironing Board
- Large Tropical Garden bordering the sea

The **160 sqm3 bedroom semi-detached villa** comprises a master bedroom with en-suite bathroom and large verandah with day bed and armchair, plus a guest room with en-suite bathroom and small verandah. These are located on the 1<sup>st</sup> floor, each commands spectacular panoramas of Silhouette and North Islands. The open-plan living room, fully equipped kitchen and dining room are situated on the ground floor, opening onto a private verandah with additional dining table and sofa. On this level there is a guest bathroom complete with shower facility.



The third bedroom, which is much larger than the master bedroom has in addition a day bed which can be converted into an extra bed upon request, is located at garden level, together with en-suite bathroom and separate changing room, opening onto a private terrace with daybed and small breakfast table. The private terrace leads out onto a small garden and a few steps away down the stairs and garden, the beach. Accommodation in this duplex is for a maximum of 6 adults or 4 adults and 2 children. The sofa bed in the 3<sup>rd</sup> bedroom can be used as an extra bed for a child below 12 years old (this on request only).



**Key features include:-**

- Direct beach access
- 2 large Private balconies as well as a small one
- DVD player
- Flat-screen satellite TV in the living room
- Internet wifi access
- Hair dryer
- In-room safe
- Iron and Ironing Board
- Large Tropical Garden bordering the sea



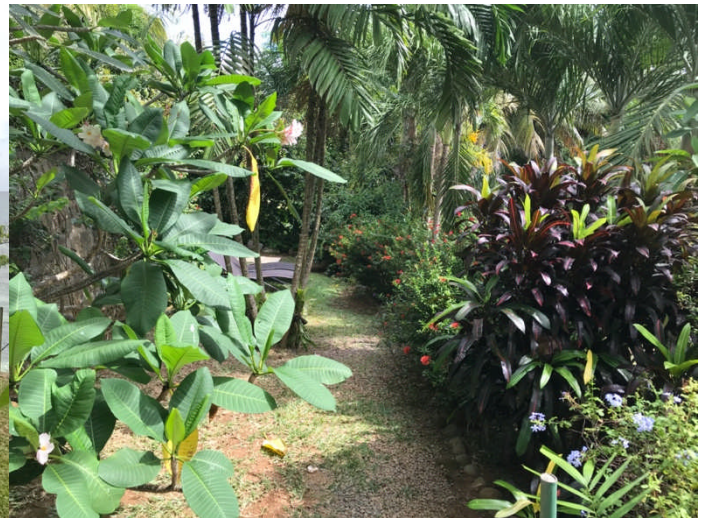
**Accommodation:**

Each living room provides an ideal space for home away from home relaxation and entertainment and is complemented by a fashionably fitted kitchen equipped with all modern amenities for your maximum convenience. Black granite counter, refrigerator, oven with both gas and electricity burners (applicable to the 2 & 3 bedrooms), normal electric oven (in the 1 bedroom) cooking utensils, coffee & tea maker, Nespresso machine, dishwasher, microwave.

The master bedroom is equipped with a king-size bed, en-suite bathroom complete with shower cubicle, toilet and vanity set. Other fittings include a large closet with individual safe, dressing table and mirror. The guest room has 2 single beds (convertible to king-size bed on request), en-suite bathroom with shower cubicle, toilet and vanity set.

Laundry facilities are available on the premises at extra cost and a maid service is available every 3<sup>rd</sup> night, ie on the 4<sup>th</sup> day. This service can be organized daily upon request of the clients and at extra cost.

Each home within the gated complex has its own parking area together with its own direct access to the nearby beach. Sun loungers are provided on the various terraces of the well-maintained tropical garden. Recent addition to the property is a swimming pool on the upper terrace - photos are not yet available as we are finalizing the landscaping in the area). Barbecue sets are available for use on the property as well as an ice box per villa/apartment. Each apartment has its own alarm system in case guests wish to make use of it and the complex is in a gated secure area.



Bel Horizon Seychelles is located next door to the Hilton Northolme Hotel and Spa and is a mere 5 minutes from the nearest mini-market. Neighbouring Beau Vallon, which is just 15-20 minutes walk away or 5 minutes by taxi, offers a host of services including dive centres and a wide range of dining options, to name a few:-

- Boat House Restaurant for a typical Creole Meal
- La Perle Noire for your favourite Italian/International cuisine with some Creole influence

- La Scala Restaurant another favourite for Italian/International cuisine with a Creole touch